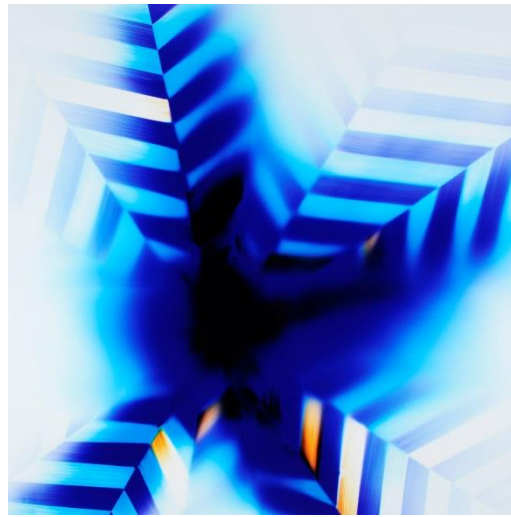


STUDENT CALL FOR ART

PHOTOGRAPHY EXPANDED: DISTINCT APPROACHES

SEPTEMBER 30 – NOVEMBER 12, 2017

Students in Grade 6 through college are invited to submit artwork to be exhibited in the Student Gallery at the California Center for the Arts, Escondido, during *Photography Expanded: Distinct Approaches*. The exhibition is open to the public from Saturday, September 30 through Sunday, November 12, 2017. Submissions will be juried by the Center's Museum & Education staff. Please read the following information thoroughly for information on the exhibition, eligibility, and submission guidelines.



Richard Slechta, *Boundary Value*, light on photo paper, 2014

ABOUT THE EXHIBITION

This group exhibition surveys photography and includes several different takes on the medium. Works by Richard Slechta, a composer of chromogenic photograms that use light as a vehicle for expression and Sol Hill who skillfully distorts his images to discover new narratives called *Missightments*. Also on display, a selection of portraits and videos from the project, *Notes to our Sons and Daughters: My Sister's Voice*, focusing on local women of diverse backgrounds who share personal stories of triumph. This exhibition will also honor the late Major Morris, a local photojournalist who's lens captured several decades of American history and culture. Along our theme of celebrating California artists, we will feature a select group of San Diego County's own well-respected local photographers, highlighting their distinct approaches to photography. For the Center's annual Día de los Muertos celebration, the Tower Gallery will display a special *ofrenda* (offering) in honor of Mr. John Medina, a passionate and beloved educator who taught in the Escondido Union School District for 20 years. Mr. Medina's former students will assist in the development and design of the altar, under the instruction of teaching artist, Daniel Martinez.

PHOTOGRAPHERS IN THE EXHIBITION

Arthur Ollman – *abstract*

Eleanor Antin – *conceptual*

visarts.ucsd.edu/faculty/eleanor-antin

Becky Cohen – *landscape*

www.noel-bazafineart.com/Noel-

[Baza Fine Art India Street Gallery/Artist Portfolios/Pages/BECKY COHEN.html](http://www.noel-bazafineart.com/Noel-Baza_Fine_Art_India_Street_Gallery/Artist_Portfolios/Pages/BECKY_COHEN.html)

Ernesto Corte – *nature*

ernestocorte.com

Sol Hill – *cityscapes*

solhill.com

Pablo Mason - *portraits*

<http://pablomasonphotography.com>

Michele McCain – *photographic storytelling*

<http://mccainimages.com>

Major Morris – *photojournalism*

<https://www.majormorris.net/>

Philipp Scholz Rittermann – *landscape*

rittermann.com/index.html

Nadia Salameh – *humanitarian*

<http://www.nadiasalamehphotography.com/bio>

Richard Slechta – *abstract chromogenic photograms*

richardslechta.com

ELIGIBILITY

The Student Gallery aims to display photographs incorporating or considering the different takes on the medium of photography exhibited in the main galleries as part of *Photography Expanded: Distinct Approaches*. We ask that students focus on the theme of **uniqueness**, while considering the **elements of art** (line, shape, light, value, color, texture, space, time, and motion) and **principals of design** (unity & variety, balance, emphasis, proportion & scale, rhythm).

Billions of photos are taken each day. When composing your work of art for submission, think about a unique approach. What is new and interesting about your image?

Student artists can submit 2D works of photography. While the primary medium of the art work is photography, students can also consider and incorporate other media into their works of art – painting, collage, digital manipulation, etc. Work must be original in concept; be appropriate for family viewing; have been executed by the submitting artist; and be on view for the duration of the exhibition.

SIZE RESTRICTION

2D artwork that requires a mat should be on 8.5" x 11" or 9" x 12" sized paper. 2D work within these sizes will be matted by the Center. **Mat opening will be 8" x 10"; image must fit within opening size.** Other sizes of 2D work are permissible and will be taken into consideration for display. Artwork can also be framed and ready to be hung.

WRITING

All entries must be accompanied by a short artist statement in 175 words or less and must use correct grammar, spelling, and sentence structure. Artwork submitted with incorrect grammar, spelling, and/or sentence structure will not be displayed. Students must use the last page of this document or an e-mail to record and send their artist statement. Your writing should focus on explaining your piece and your artistic choices and methods.

IMPORTANT DATES

Submissions open: Thursday, August 17, 2017

Intent to participate notification to kvega@artcenter.org by Friday, September 1, 2017

Submissions closed: Monday, September 18, 2017

Notification of acceptance into exhibition: Friday, September 22, 2017

Opening reception: Friday, September 29, 5:30 – 7:30pm

Pickup of artwork after the exhibition closes will begin on Monday, November 20, 2017. Center staff will be in contact with you regarding picking up artwork. Any artwork not picked up beyond six months after the exhibition closing date will be de-accessioned as the Museum sees fit.

CONTACT THE CENTER:

Kirsten Barrientes Vega
Arts Education Program Supervisor
(760) 839-4176
kvega@artcenter.org

www.artcenter.org

340 N. Escondido Blvd.
Escondido, CA 92025

ABOUT THE CALIFORNIA CENTER FOR THE ARTS, ESCONDIDO

With a mission of bringing people together to discover, create, and celebrate both the visual and performing arts, the California Center for the Arts, Escondido is the cultural center of North San Diego County.

The Center's unique campus includes a 1,523-seat concert hall, a 404-seat theater, a contemporary art museum, art studios, and a conference center with meeting and banquet facilities. The Center's Museum is an inviting 9,000-square-foot exhibition space that boasts three galleries, a dedicated youth exhibition gallery wall, secure storage, and a gift shop. Workshops, art activities, and museum tours give visitors a direct experience with the arts. Go to www.artcenter.org for more information.

